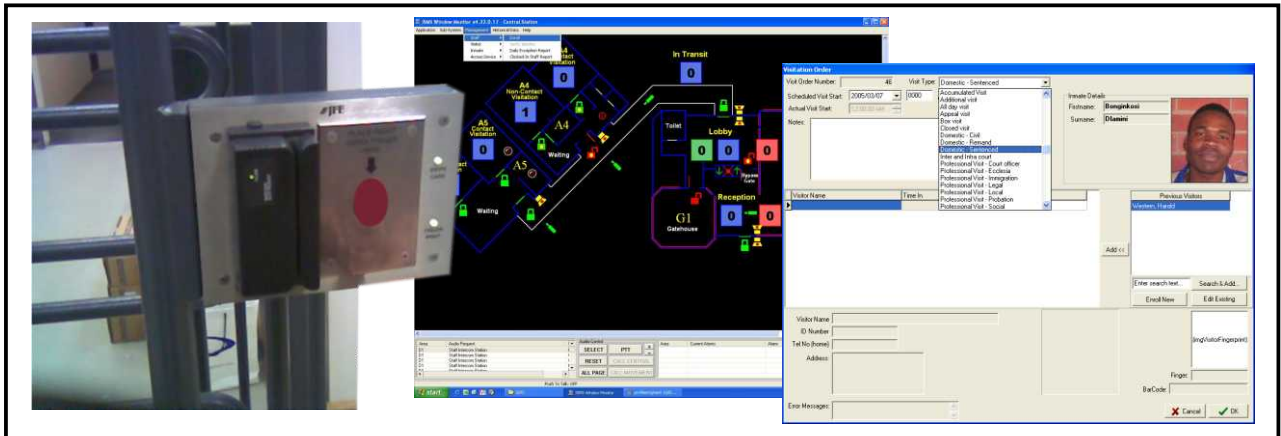


Visitor, Staff, Inmate Management



JFE Security supplies a complete visitor, staff and inmate management system seamlessly integrated with their total security system (SMS). The system comprises the following:

Visitor Enrollment Station

The Visitor Enrollment Station consists of a dedicated PC workstation situated at the general or visitors entrance. The station consists of a PC, Swipe Barcode reader, fingerprint reader, Camera, Desktop PVC visitor card Printer and a storage tray for temporary visitation cards. The station is used to enroll visitor information into the system, and to print and issue a plastic (PVC) Bar Code Identification Card for each visitor, which shall contain the visitor details including a picture for identification.

Visitor Verification Station

Visitor Verification stations are typically installed at each visitation area e.g. Contact and Non-Contact visitation, and consists of a PC workstation, Handheld Barcode reader and a fingerprint reader. The station is used to verify a visitor's identity both upon entering and leaving the area.

Admissions Enrollment/Admissions/Release Station

The Admissions Enrollment station consists of a dedicated PC workstation situated in the Admissions building. The station consists of a PC, fingerprint reader, Barcode Reader, Camera and Desktop PVC visitor card Printer. The station is used to enroll Inmate information into the system, including the importing of existing Inmate particulars from the DCS A&R database and the capturing of the inmates picture and fingerprints. In addition this station is used for the management of temporary inmate release including release to Courts, Hospitals, Day parole etc.

Management Administration Station

The Management station is typically installed within the Administration building, and consists of a PC workstation, Swipe Barcode reader, fingerprint reader, Camera, LaserJet reporting printer and a Desktop PVC visitor card Printer.

The station is used to Enroll staff members and Inmates onto the system.

Staff members have their picture and fingerprints captured and are issued with a permanent staff access card, which is required to enter and leave the facility via the entrance turnstile.

Inmate particulars may be imported from existing Departmental databases, and fields are made available into which additional Inmate particulars may be entered and edited as required. The system has the ability to query various databases with archiving ability and a CD writer for backups.

Technical Data

The complete visitor, staff and inmate management system runs under Microsoft Windows, a powerful desktop operating system with a focus on performance, security, reliability, and manageability. Windows has proven to be a reliable operating system, resulting in significantly lower downtime for users. The increased reliability results in part from the fact that the operating system actively protects itself, device drivers and applications from failures. Therefore, if one application fails, the rest of the system continues to run normally.

The high level of security in Windows provides benefits in both standalone and connected environments, regardless of your choice of network operating system providing a virtual gate through which all users, resources, and applications must pass, giving you comprehensive control and security.

Windows offers lower support costs, integrated user management, and simplified administration through integrated systems management and security. This environment also provides scalable client-server interoperability with the hundreds of business applications that run on Microsoft Windows.