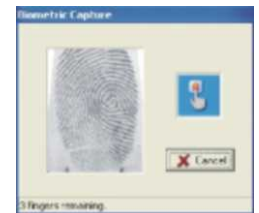


Access Control - Biometric Systems



JFE Security uses a Biometric Management environment for Visitation, Staff and Inmates within secure environments. This system integrates seamlessly with the JFE Security Security Management System (SMS). This integrated product provides a complete Identification Management solution and incorporates the following sub-components:

- Visit Booking
- Visitor, Staff and Inmate Enrolment
- Visitor, Staff and Inmate Verification
- Visitor, Staff and Inmate location tracking
- Visitation Management
- Staff Management
- Inmate Management
- Cashless Society
- Identification Card Production



Technical Data

This Biometric system is integrated into the Security Management environment enabling complete monitoring and control of existing security sub-system hardware by the Biometric Management System, such as opening and closing of doors and turnstiles.

The suite of applications, provide a true integration platform that supports components and sub-systems from a broad range of industry hardware manufacturers into a single, functionally enhanced, centrally controlled integrated security system.

CCTV, Intercom, Door Control, Access Control, Biometric Management and Inmate/Warden monitoring sub-systems are seamlessly integrated into a graphically based control system.

A basic system consists of the following components, it however can be expanded indefinitely:

- 1 x Electrically actuated Turnstile (Dual Direction), with a "Swipe" type Barcode reader and Fingerprint reader mounted on each side (General or Visitors entrance gate).
- 1 x Visitor Enrollment station (General or Visitors entrance gate).
- 2 x Visitor Verification stations (Contact and Non-Contact Visitation areas).
- 1 x Management Administration station (Administration building).
- 1 x Admissions Enrolment/Admissions/Release Station (Admissions building)